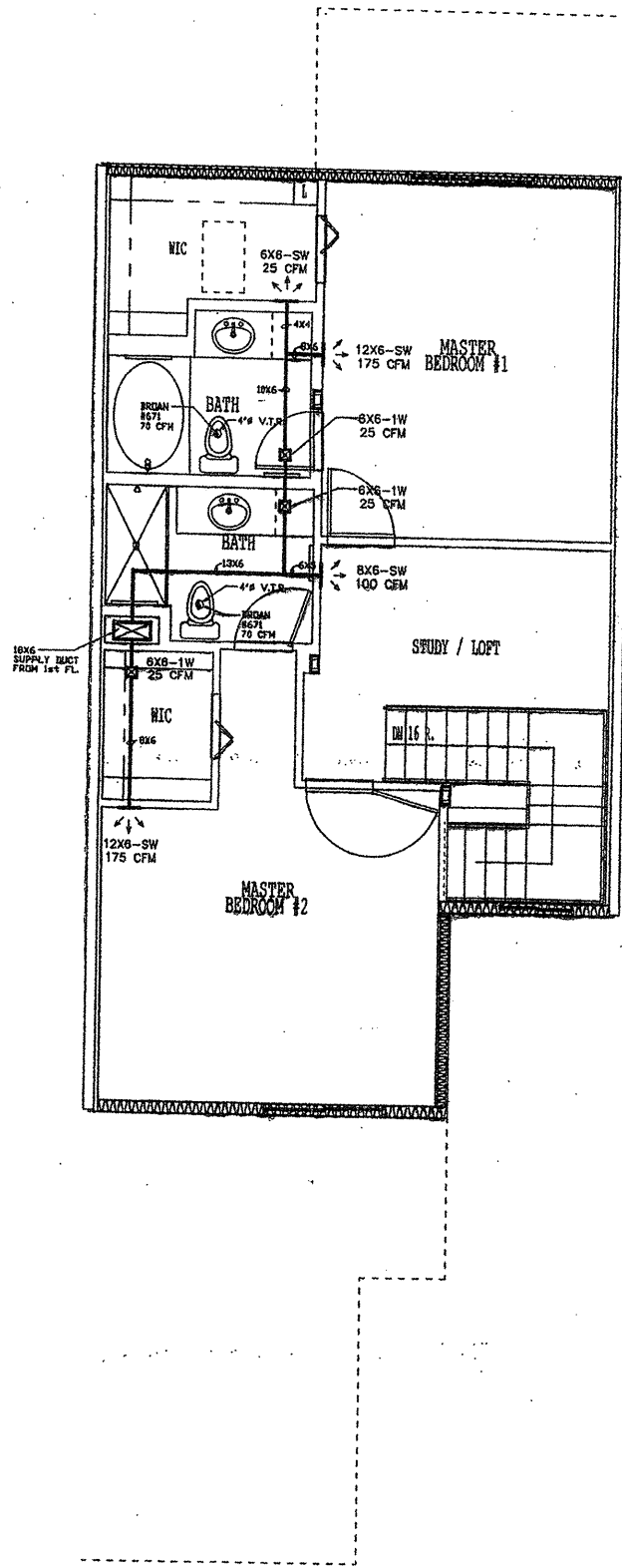


AIR HANDLING UNIT SCHEDULE																	
SELECTION BASED ON: CARRIER		FAN DATA				FAN MOTOR		CAPACITIES (MBH)		STRIP HEATER		ELECTRICAL DATA					
DESIGNATION	MODEL NO.	HEATER	CFM SUPPLY	CFM O.A.	EXT. S.P. IN. V.G.	H.P.	AMPS	COOLING TOTAL	HEATING TOTAL	K.V.	STEPS	VOLTS PHASE	HTR AMPS	HCA	HDCP	WT. (LBS)	
AHU-1	FF1DAD30075	7.5KW	1000		.3	1/3	2.0	28.0	20.3	25.9	5.0	1	240/1#	30.0	40.0	40	40

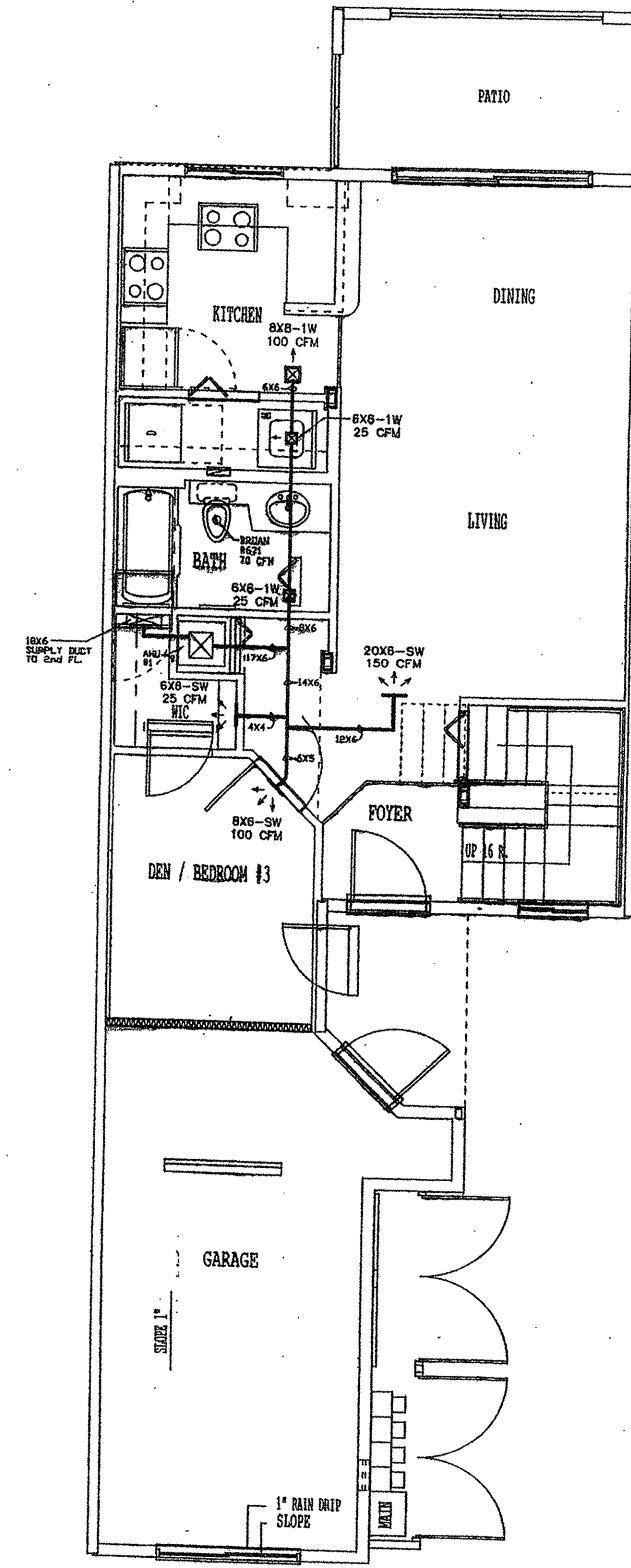
CONDENSING UNIT SCHEDULE											
SELECTION BASED ON: CARRIER		COMPRESSOR DATA		FAN MOTOR		EFFICIENCY		ELECTRICAL DATA			
DESIGNATION	MODEL NUMBER	RLA	LRA	H.P.	AMPS	SEER	COP	VOLTS PHASE	AMPS	HDCP	WT. (LBS)
CU-1	38CKC030	14.2	75.0	1/10	0.8	10.00	N/A	240/1#	18.6	25.0	124

AC-1  
 PLENUM 19"X11" S/A  
 SUCTION LINE 3/8" COPPER WITH 1/2" CLOSED CELL INSULATION  
 LIQUID LINE 3/8" COPPER  
 CONDENSATE 3/4" PVC SCH. 40

NOTES:  
 1. POWER AND CONTROL WIRING BY E.C.  
 2. EXHAUST FANS SUPPLIED AND INSTALLED BY FHAC  
 3. COND. DRAIN LINES BY PLUMBER, FINAL CONNECTIONS BY FHAC



SECOND FLOOR PLAN UNIT-E.1 822 SF  
 1/4" = 1'-0"



FIRST FLOOR PLAN UNIT-E.1 743 SF  
 1/4" = 1'-0"

REVISIONS	

DATE: 3-14-01  
 SCALE: AS NOTED  
 DRAWN BY: JRH  
 CHECKED: SP

THE GRAND AT PALM BEACH GARDENS-UNIT E.1  
 KOLTER BUILDERS  
 FLORIDA HEATING & AIR CONDITIONING, INC.  
 1700 BANKS ROAD, MARGATE, FL 33063 (305) 973-0900

SHEET NO.  
 AC-7

RECEIVED  
 JUN 28 2001

UNIT-E.1

FHAC #205811-7

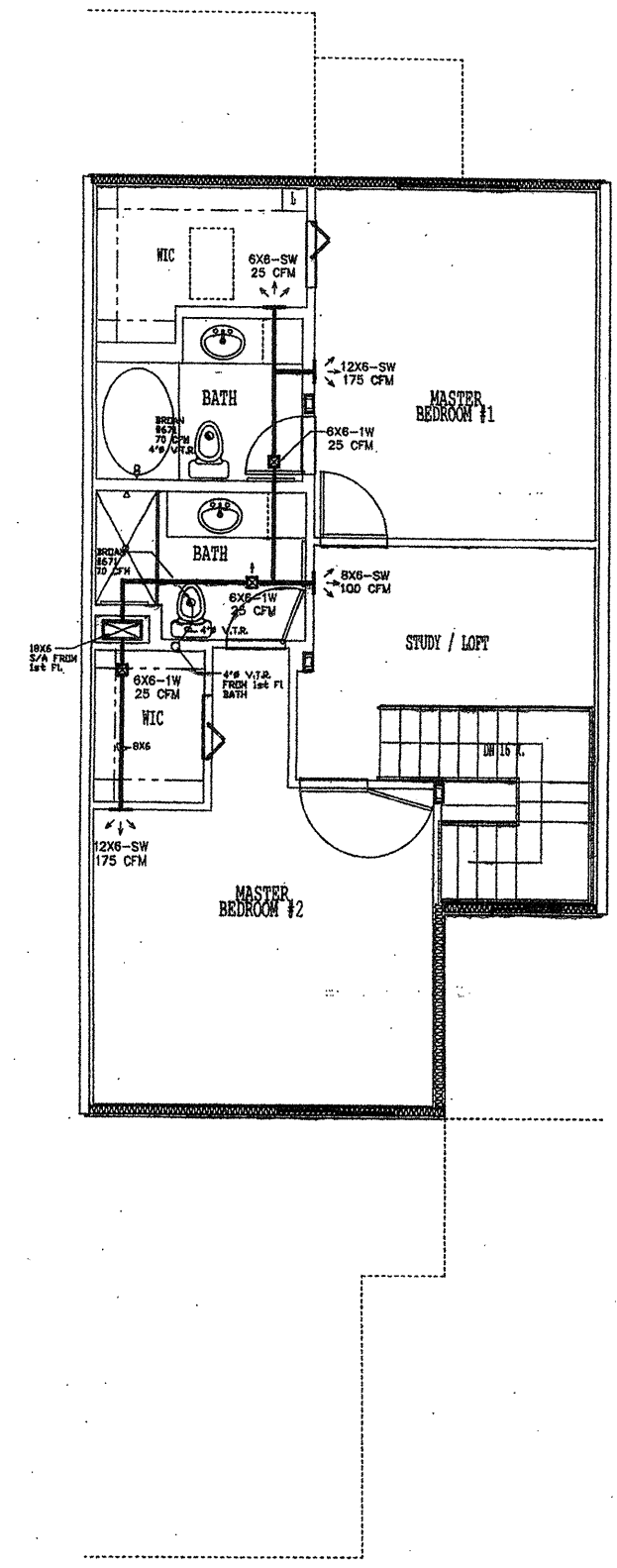
C:\WORKSHEET\TEMP\E.1.dwg Plot Date: 06/26/01

AIR HANDLING UNIT SCHEDULE																	
SELECTION BASED ON: CARRIER			FAN DATA			FAN MOTOR		CAPACITIES (MBH)			STRIP HEATER			ELECTRICAL DATA			
DESIGNATION	MODEL NO.	HEATER	CFM SUPPLY	CFM O.A.	EXT. S.P. IN. V.G.	H.P.	AMPS	COOLING TOTAL	HEATING TOTAL	K.W.	STEPS	VOLTS PHASE	HTR AMPS	MCA	MDCP	WT. (LBS)	
AHU-1	FF10NAG30075	7.5KW	1000	---	3	1/3	2.0	28.0	20.3	25.9	5.0	1	240/14	38.0	40.0	40	40

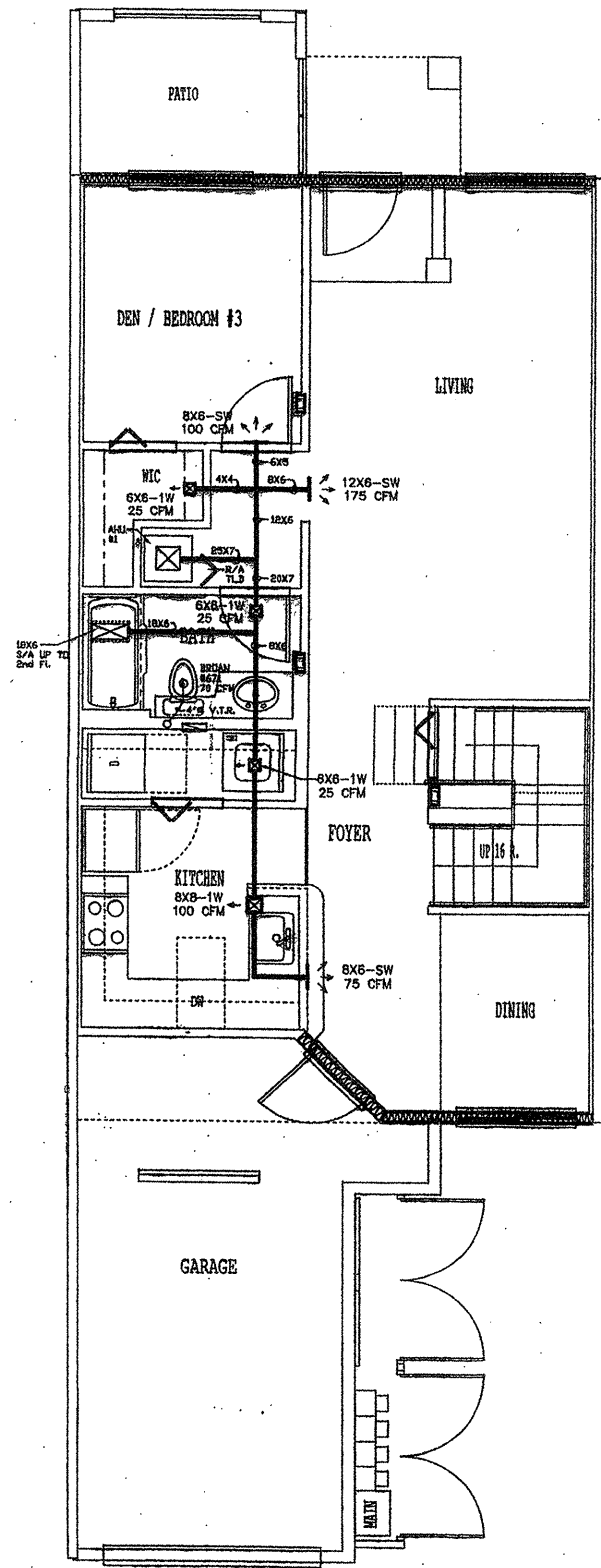
CONDENSING UNIT SCHEDULE													
SELECTION BASED ON: CARRIER		COMPRESSOR DATA		FAN MOTOR		EFFICIENCY		ELECTRICAL DATA					
DESIGNATION	MODEL NUMBER	R.L.A.	L.R.A.	H.P.	AMPS	SEER	COP	VOLTS PHASE	AMPS	MDCP	WT. (LBS)		
CU-1	38CKC030	14.2	78.0	1/10	0.8	10.00	N/A	240/14	18.6	25.0	124		

AC-1  
 PLENUM 12"X11" S/A  
 SUCTION LINE 5/8" COPPER WITH 1/2" OLDSID CELL INSULATION  
 LIQUID LINE 3/8" COPPER  
 CONDENSATE 3/4" PVC SCH. 40

NOTES  
 1. POWER AND CONTROL WIRING BY E.C.  
 2. EXHAUST FANS SUPPLIED AND INSTALLED BY FHAC  
 3. COND. DRAIN LINES BY PLUMBER, FINAL CONNECTIONS BY FHAC



SECOND FLOOR PLAN UNIT-E.2 822 SF  
 1/4" = 1'-0"



FIRST FLOOR PLAN UNIT-E.2 743 SF  
 1/4" = 1'-0"

REVISIONS
-----------

DATE: 3-14-01
SCALE: AS NOTED
DRWG BY: JRH
CHECKED: SP

THE GRAND AT PALM BEACH GARDENS-UNIT E.1  
 KOLTER BUILDERS  
 FLORIDA HEATING & AIR CONDITIONING, INC.  
 1700 BANKS ROAD, MARGATE, FL 33063 (305) 973-0900

SHEET NO.

AC-8

RECEIVED  
 18 2001

UNIT-'E.2'

FHAC #205811-8

C:\WORKING\TEMP\2001\1901\1901.dwg 1901 Mac 19 08:28:43 2001